

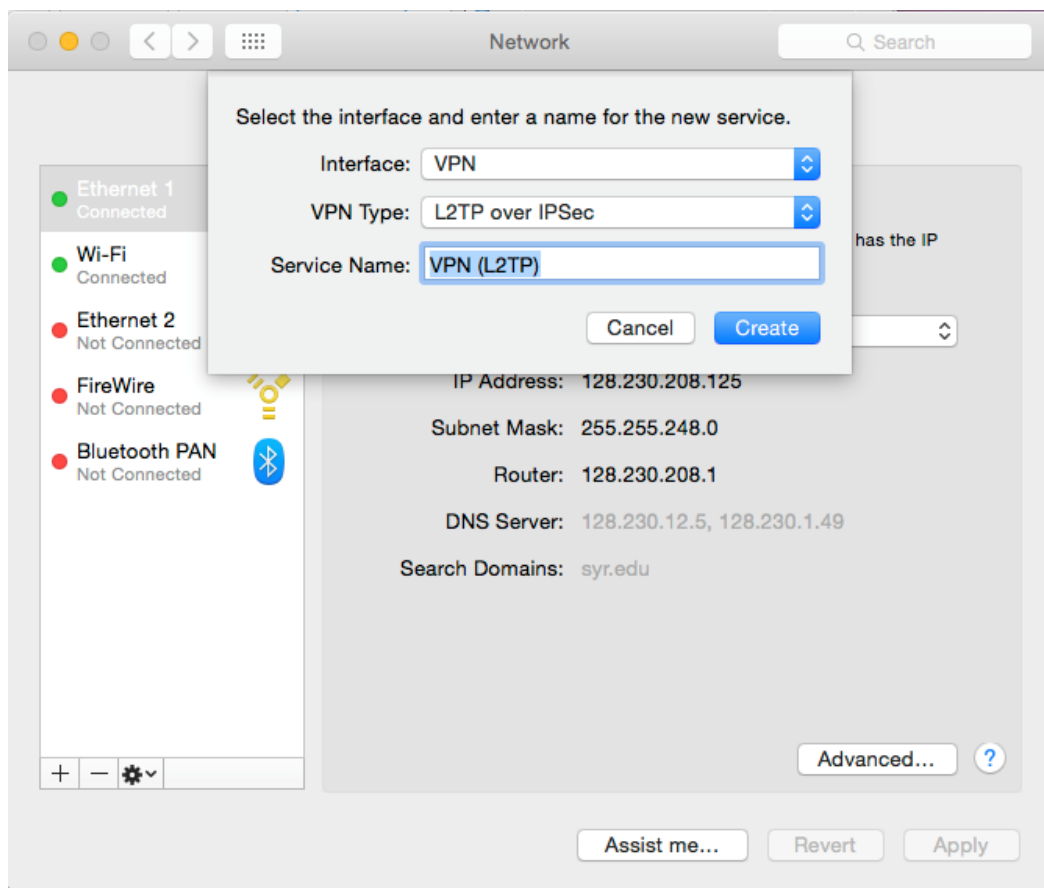
# Remote Access: Mac

## Section 1: Accessing SU VPN

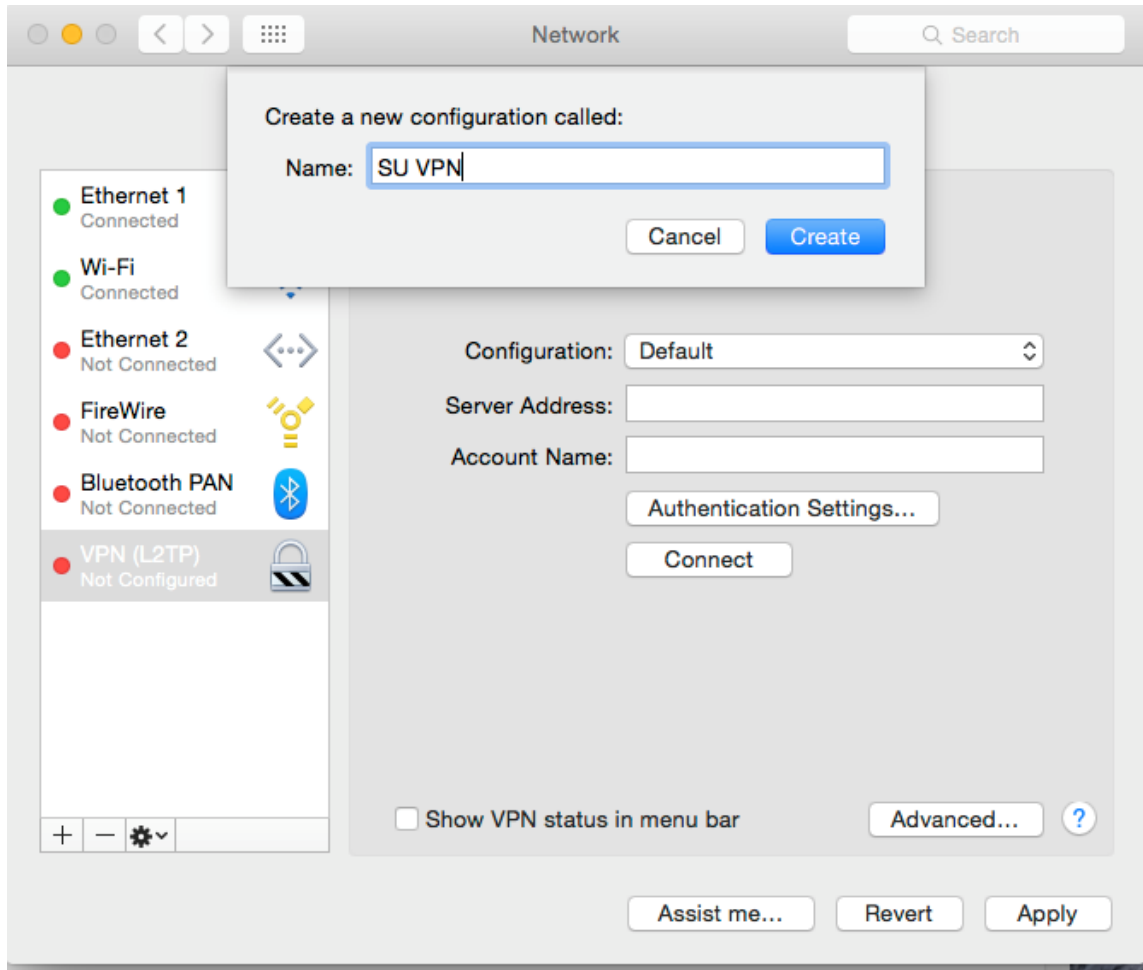
**Note: This part is required only if you are off-campus and not connected to “AirOrangeX.” If you are connected to “AirOrangeX,” skip to Section 2: Downloading Microsoft Remote Desktop.**

Before you can connect to the terminal server, you must connect to Syracuse’s VPN. You will only have to follow steps 1-10 the very first time you add SU VPN. You can skip to step 11 thereon after.

1. Open “System Preferences”.
2. On the bottom left hand corner, click on the “+” sign to create a new service.
3. Select or type the following under the appropriate sections and then click “Create”.
  - a. Interface: **VPN**
  - b. VPN Type: **L2TP over IPsec**
  - c. Service Name: **VPN (L2TP)**

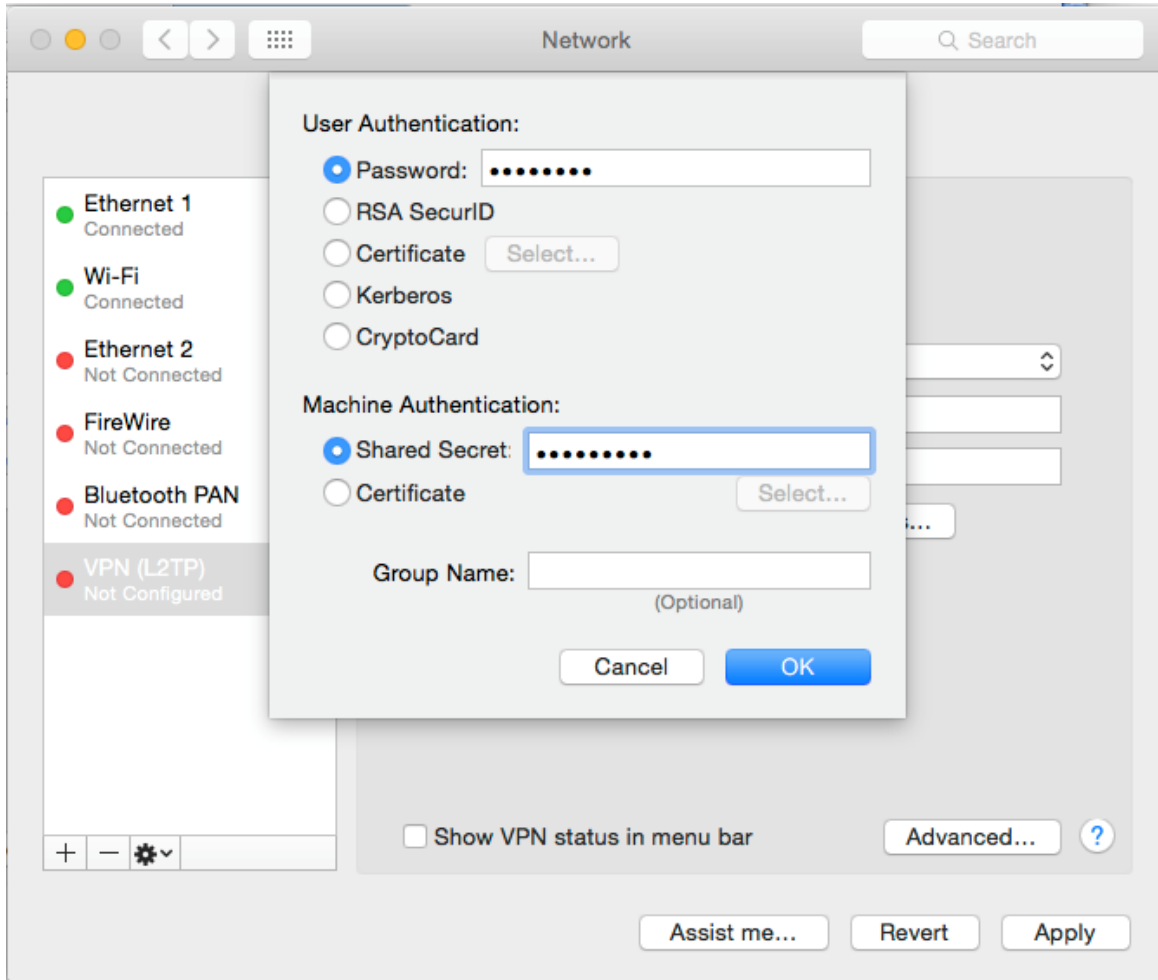


4. "VPN (L2TP)" should now appear as a network service. Click on it, and select "Add Configuration" under "Configuration."
5. Label your configuration as anything you'd like and click "Create."  
**Hint:** It is recommended that you name your configuration "SU VPN".



6. Fill out the remainder of the fields as shown below:
  - a. Server Address: **vpn.syr.edu**
  - b. Account Name: **your SU NetID**

7. Click the “Authentication Setting” button, fill in the information as shown below, and click “OK.”
  - a. Password: **your SU NetID password**
  - b. Shared Secret: **ThisIsPSK**



8. Click the check box “Show VPN status in menu bar.”
9. Click the “Advanced...” button and make sure “Send all traffic over VPN connection” is **not** checked. Click “OK.”
10. Click “Apply” and close System Preferences.
11. To start VPN, go to the menu bar on the upper right hand corner and click on the icon that looks like this:



12. Select “Connect VPN (L2TP).”  
**Note:** If the connection works, the above-mentioned item will change to “Disconnect VPN (L2TP).” Select this when you wish to disconnect from the VPN.

## Section 2: Downloading Microsoft Remote Desktop

Now that you are connected to the SU VPN (if off-campus), you are ready to download Microsoft Remote Desktop, which will be the program that connects your personal computer to the remote access server.

1. Open the App Store application.
2. Search for **Microsoft Remote Desktop** in the upper right hand corner.
3. Install the application corresponding to the one below.



### Microsoft Remote Desktop

Business

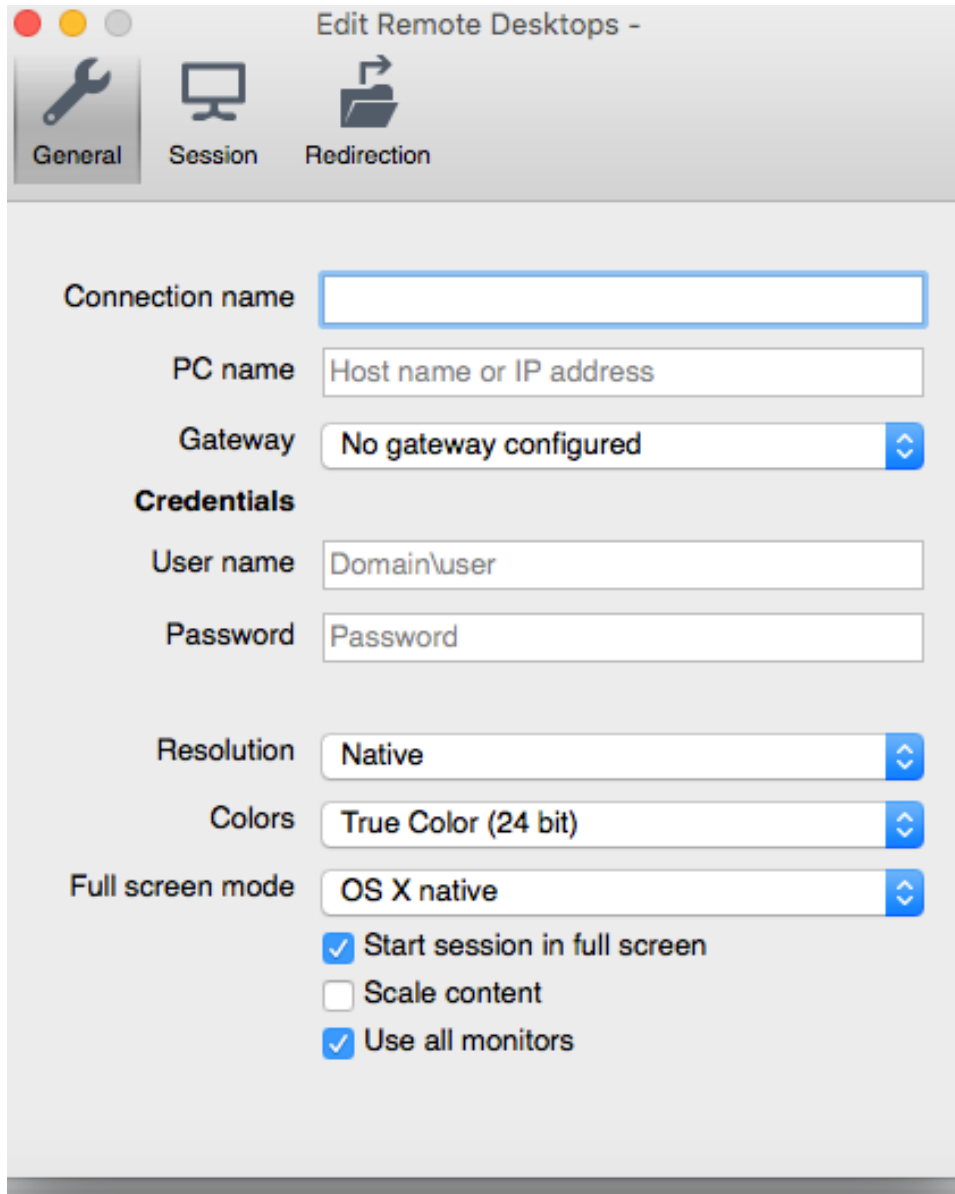
★★★★☆ 9 Ratings

GET ▼

4. Open Microsoft Remote Desktop.

5. Click **New** on the upper left hand corner.

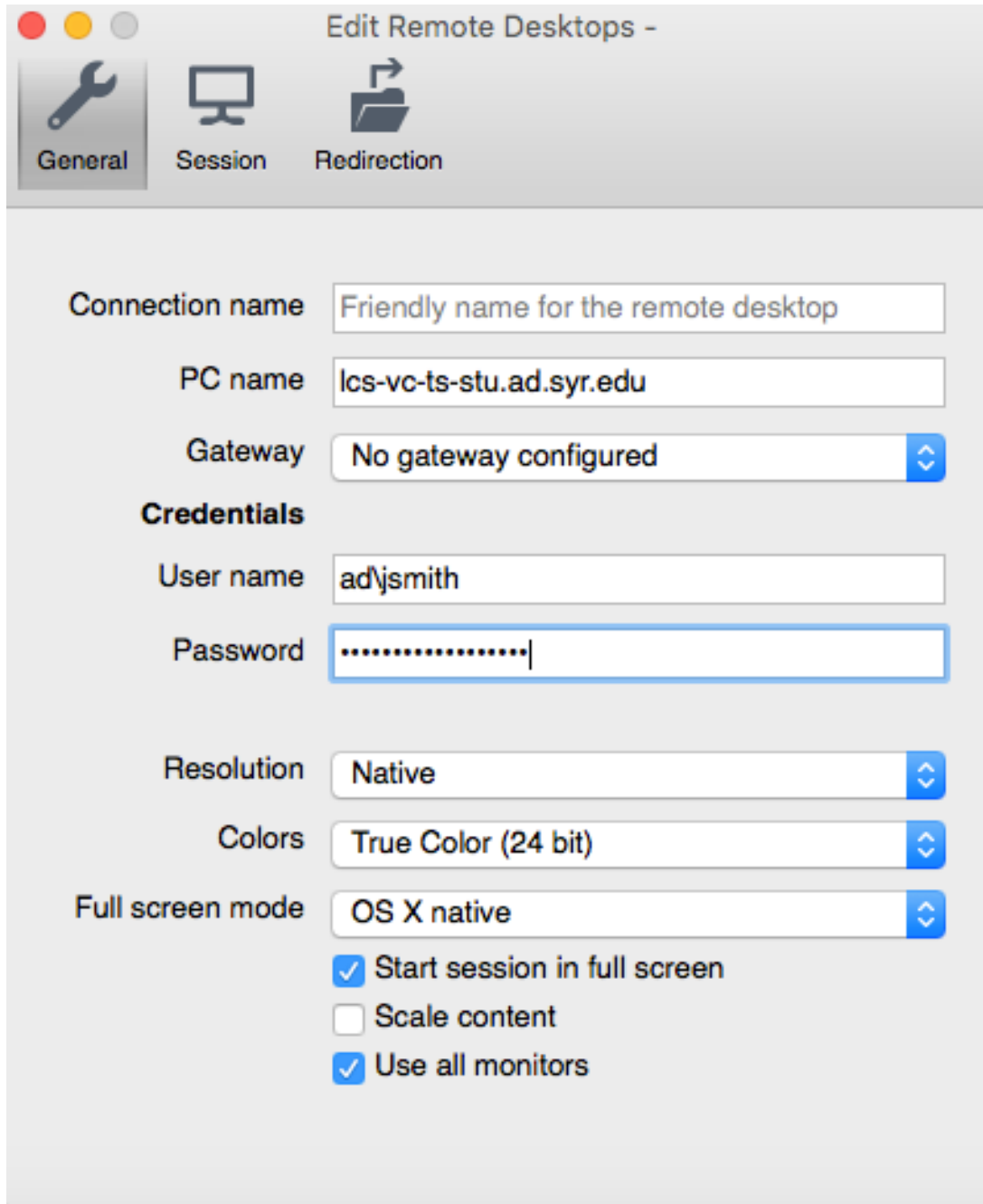
**Note:** You should get a screen that looks like this:



6. Click on the **General** tab.

7. Type in the following for the appropriate sections:
- a. Connection: Anything you would like to name your Remote Connection (optional)
  - b. PC name: **lcs-vc-ts-stu.ad.syr.edu**
  - c. User name: **ad\SU NetID**
  - d. Password: **SU NetID password**

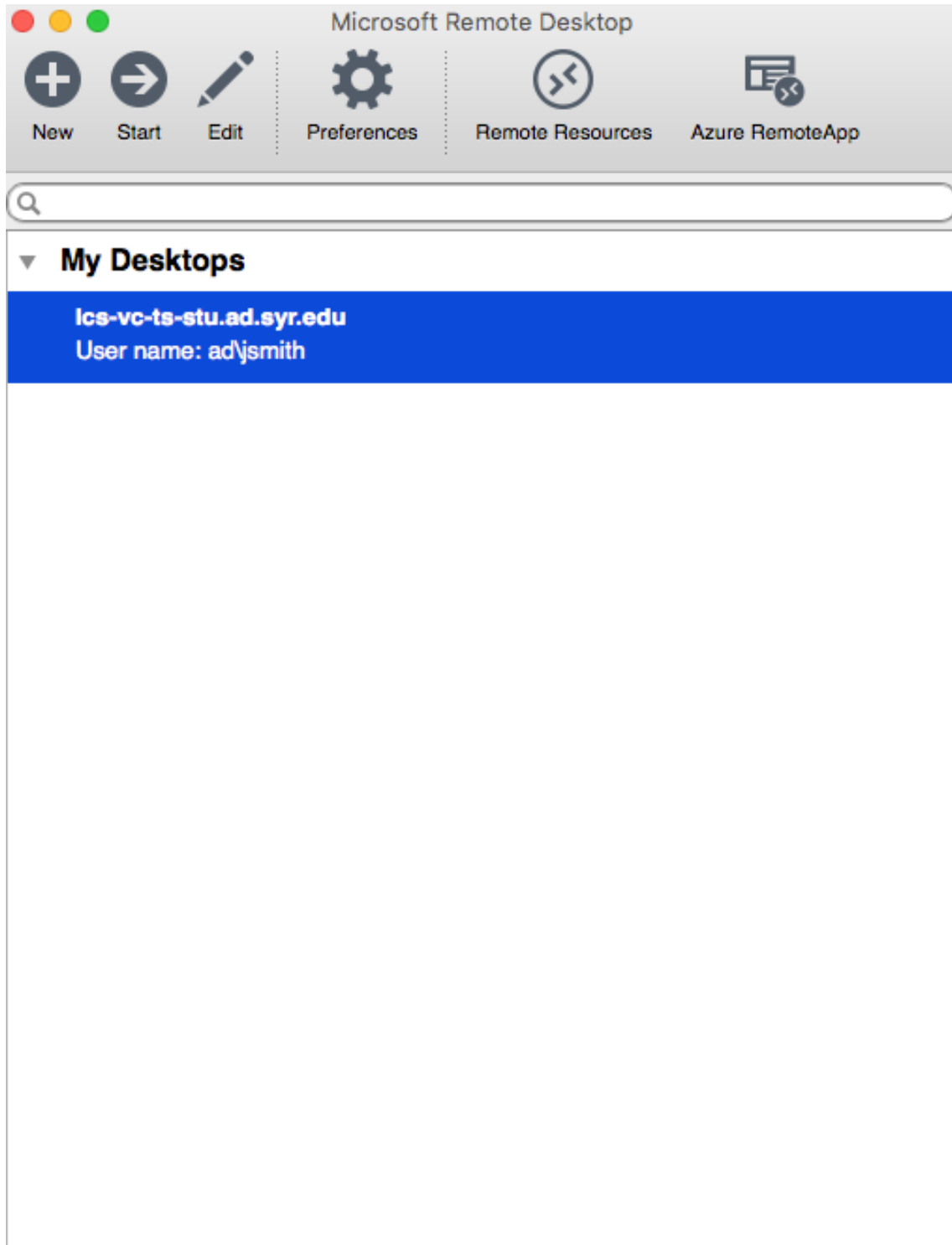
**Note:** Your screen should look like this once you have entered everything in correctly.



The screenshot shows the 'Edit Remote Desktops' window with the following configuration:

- General** tab is selected.
- Connection name:** Friendly name for the remote desktop
- PC name:** lcs-vc-ts-stu.ad.syr.edu
- Gateway:** No gateway configured
- Credentials:**
  - User name:** ad\jsmith
  - Password:** [Redacted]
- Resolution:** Native
- Colors:** True Color (24 bit)
- Full screen mode:** OS X native
  - Start session in full screen
  - Scale content
  - Use all monitors

8. Close this window to save your settings.
9. Click on **My Desktops**. Your saved Remote Connection should show up under this tab, as shown below.



10. Double click on your personalized Remote Connection.
11. Remote Desktop will load your syr account. Click "Continue" when the "Verify Certificate" window pops up.
12. Once your desktop has loaded up, click on the "Start" window in the bottom left hand corner, and click the "↑" button to access your applications.

You should now see all the applications that are available to you and should be able to work on any of them remotely!

**Once you are done using Remote Access,**

1. Please "Log Off" from the "Start" window on the bottom left corner of your screen.
2. Quit "Microsoft Remote Desktop."
3. Disconnect from the VPN by clicking the below icon from the menu bar on the upper right-hand corner and selecting "Disconnect VPN (L2TP)."