

Remote Access from Off Campus: Windows 10

- 1) Go to <https://its.syr.edu/downloads/> and click on the hyperlink for “SURA Remote Access”.

The screenshot shows the ITS Downloads page. A table lists software downloads. The 'Operating System' column for the 'SURA Remote Access Tool (2.0.0.1)' is circled in red.

Product (select for instructions)	Operating System	Release Date	Description	Restrictions
SURA Remote Access Tool (2.0.0.1)	Windows 7, 8.1 & 10	09/18/2011	SURA provides secure remote access to Syracuse University computing resources. It both installs and configures the SU VPN connection as well as maps network drives/printers, makes remote desktop connections, and simplifies OWA email access. Windows XP users must have the .Net 2.0 framework (or higher) installed for this client to function. You can download version 3.5 here . Required reading Federal export law and VPN software.	SURA combines many technologies that allow remote access to campus computing resources. As such, not all resources are available to all users. Those with questions as to the level of access SURA provides should contact their local support staff.
MAC OS X 10.6+ (Snow Leopard, Lion, Mountain Lion, Mavericks, and Yosemite) VPN Setup Tool	Mac OS X 10.6+	03/18/2011	VPN setup for Mac OS X 10.6+ (Snow Leopard, Lion, Mountain Lion, Mavericks, and Yosemite)	
Linux VPN Client	Linux	6/11/2009	0.9.6 release of a Linux VPN client for connections to the Syracuse University VPN. The current release offers support for Ubuntu 7.10, 8.04.	Faculty, Staff, Student

- 2) On the following screen, click on the link to download the SURA tool. Once downloaded, run the program.

The screenshot shows the SURA Remote Access download page. The 'Download SURA' button is highlighted.

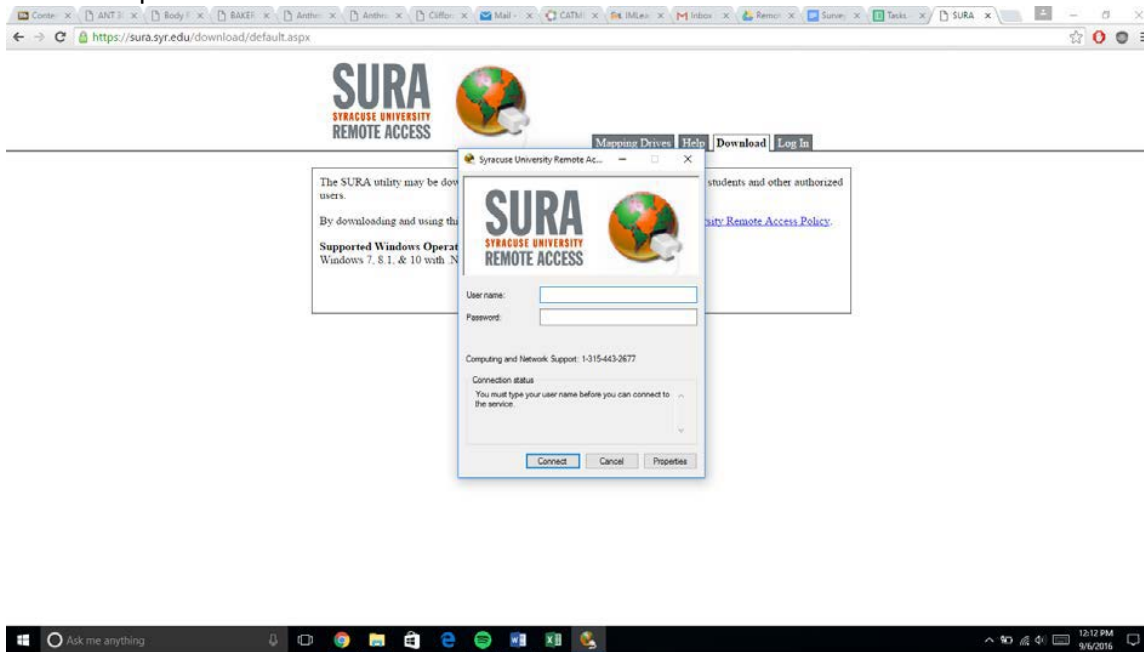
The SURA utility may be downloaded for use by Syracuse University faculty, staff, students and other authorized users.

By downloading and using this software you agree to adhere to the [Syracuse University Remote Access Policy](#).

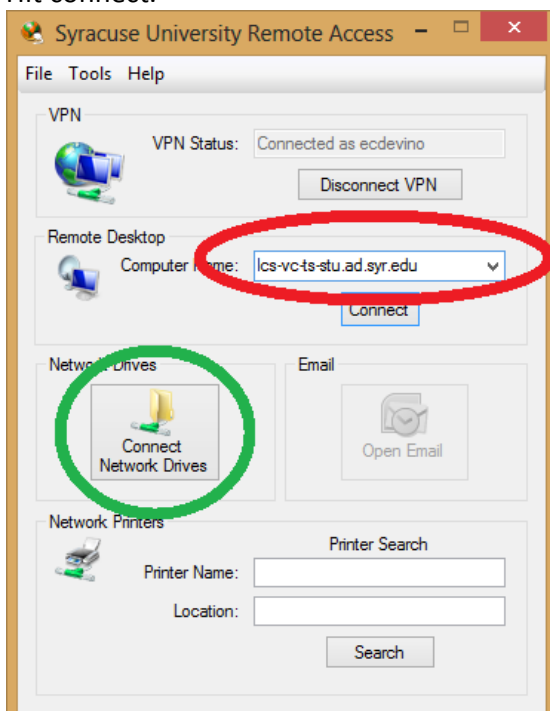
Supported Windows Operating Systems:
Windows 7, 8.1, & 10 with .NET Framework 4.5.1 or greater

[Download SURA](#)

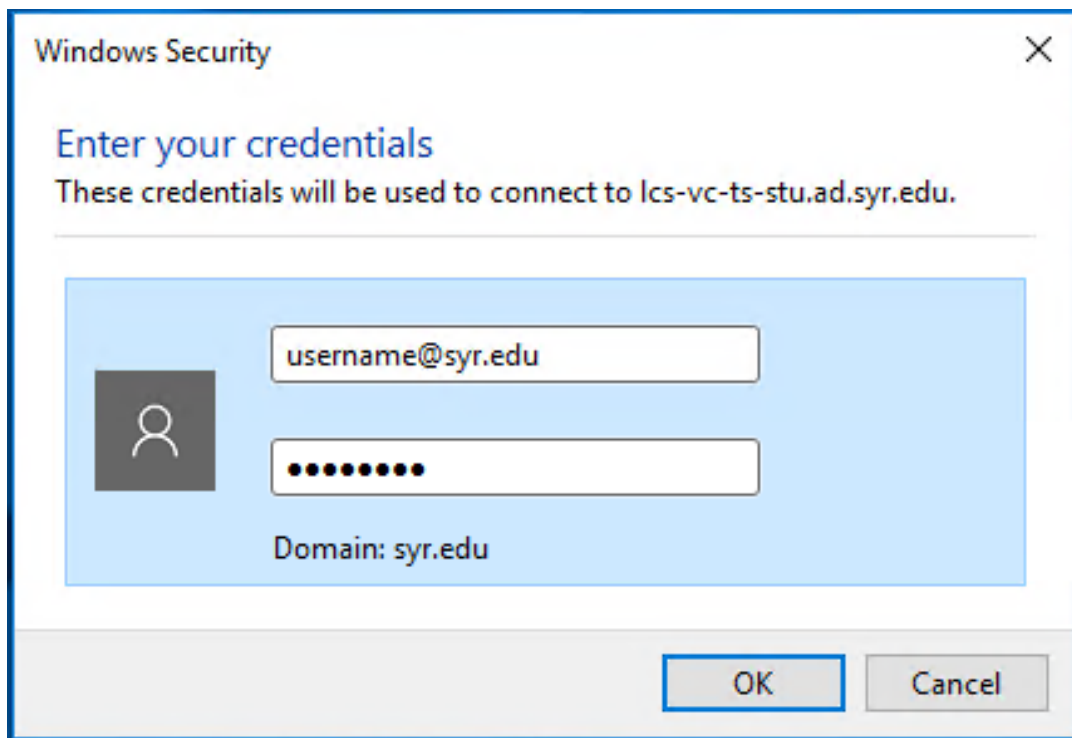
3) After downloading, run the program. A SURA screen will be prompted where you will enter your NetID and password.



4) Once info is submitted, two more windows are prompted. Next, you will be connected to your files online. You can access those files by clicking the “Connect Network Drives” button (green circle). To actually connect to the remote server, you must put in the proper name for the text box entitled “Computer Name”. Put the exact phrase “lcs-vc-ts-stu.ad.syr.edu” in this box (red circle). Hit connect.



5) Another window will be prompted, in which you must input your NetID and password once more. This time, you must enter your email address for syr.edu (NetID@syr.edu) or you can type your NetId after typing AD\ (AD\NetID).



Windows Security

Enter your credentials

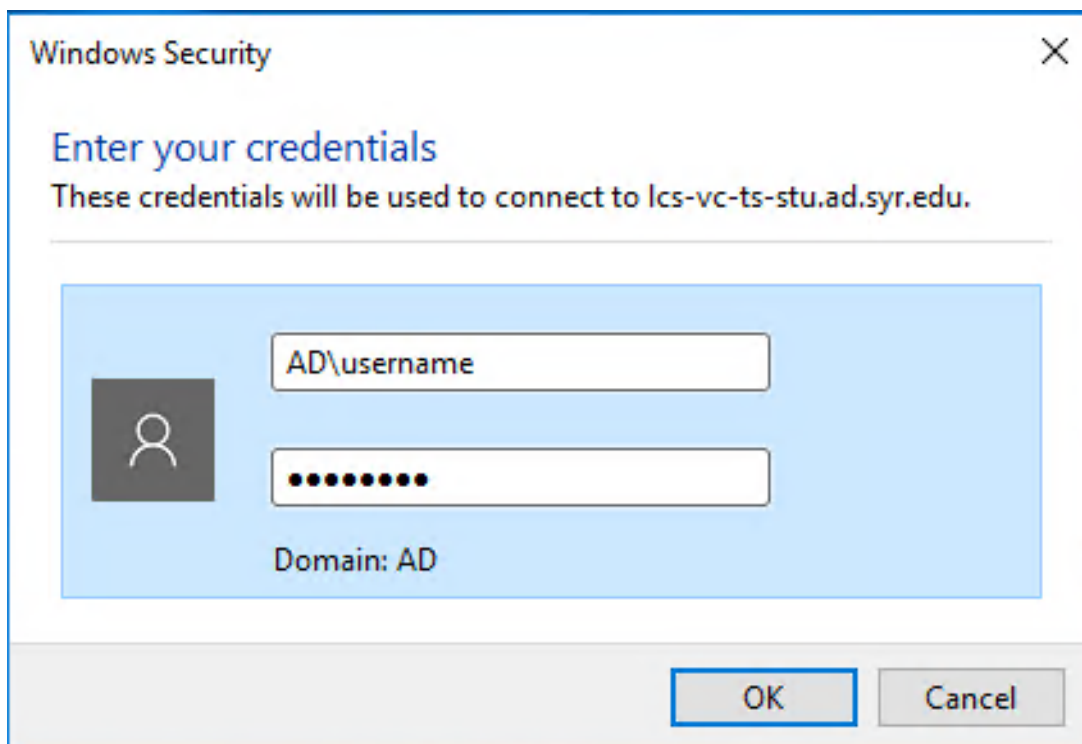
These credentials will be used to connect to lcs-vc-ts-stu.ad.syr.edu.

username@syr.edu

.....

Domain: syr.edu

OK Cancel



Windows Security

Enter your credentials

These credentials will be used to connect to lcs-vc-ts-stu.ad.syr.edu.

AD\username

.....

Domain: AD

OK Cancel

6) Once proper information is input, another window will be prompted. Click “yes” in this window.

