

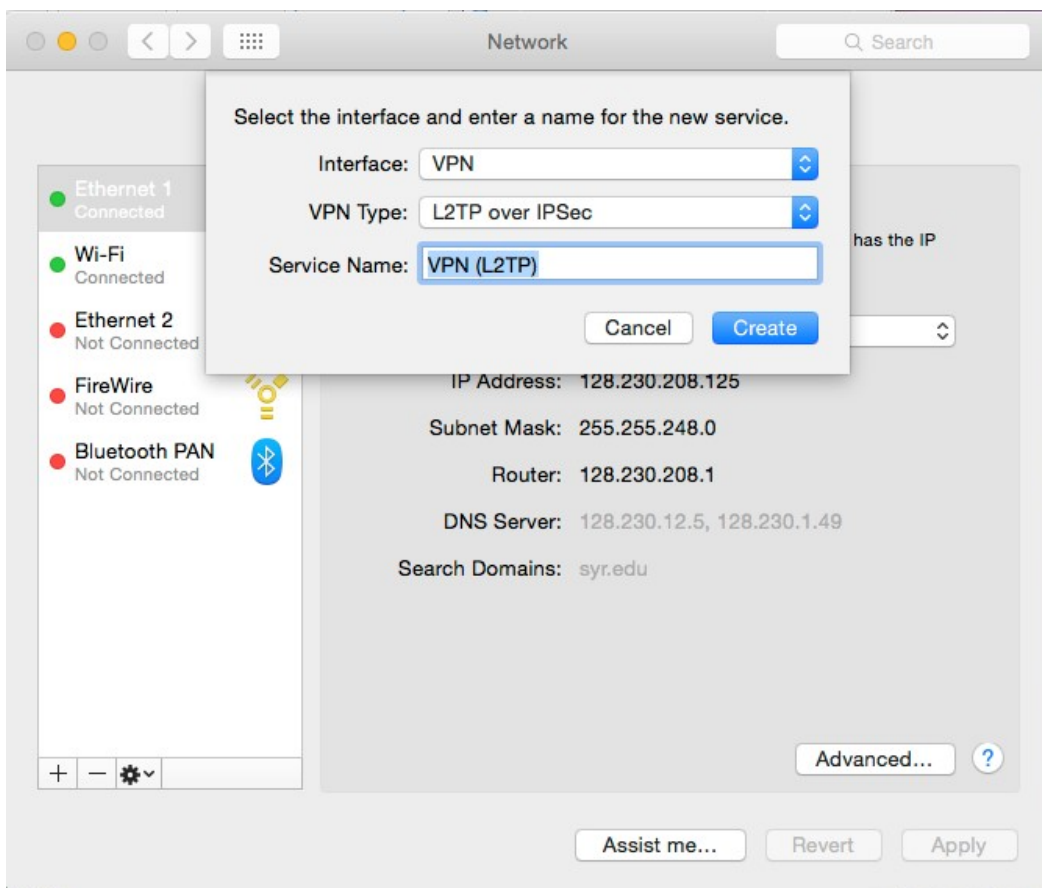
Remote Access: Mac

Section 1: Accessing SU VPN

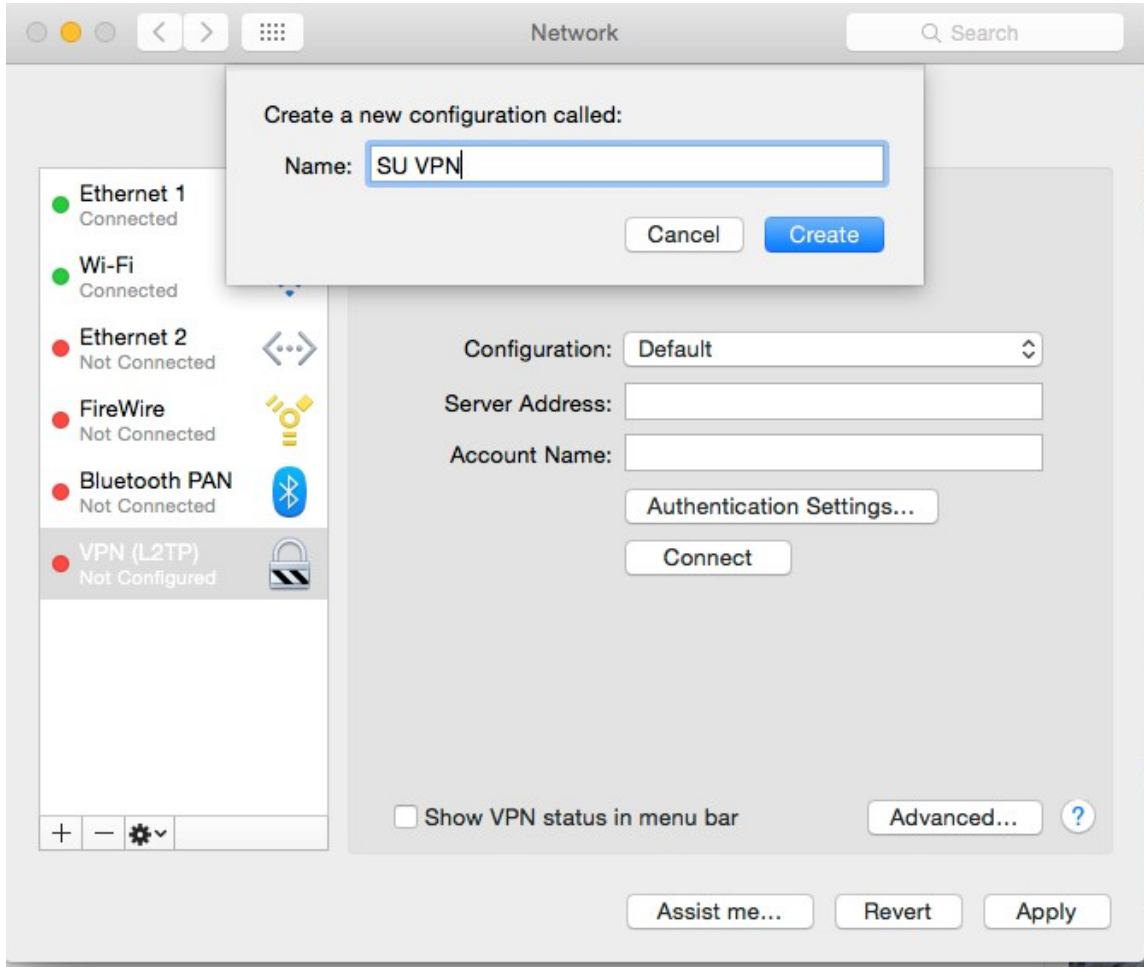
Note: This part is required only if you are off-campus and not connected to “AirOrangeX.” If you are connected to “AirOrangeX,” skip to Section 2: Downloading Microsoft Remote Desktop.

Before you can connect to the terminal server, you must connect to Syracuse’s VPN. You will only have to follow steps 1-10 the very first time you add SU VPN. You can skip to step 11 thereon after.

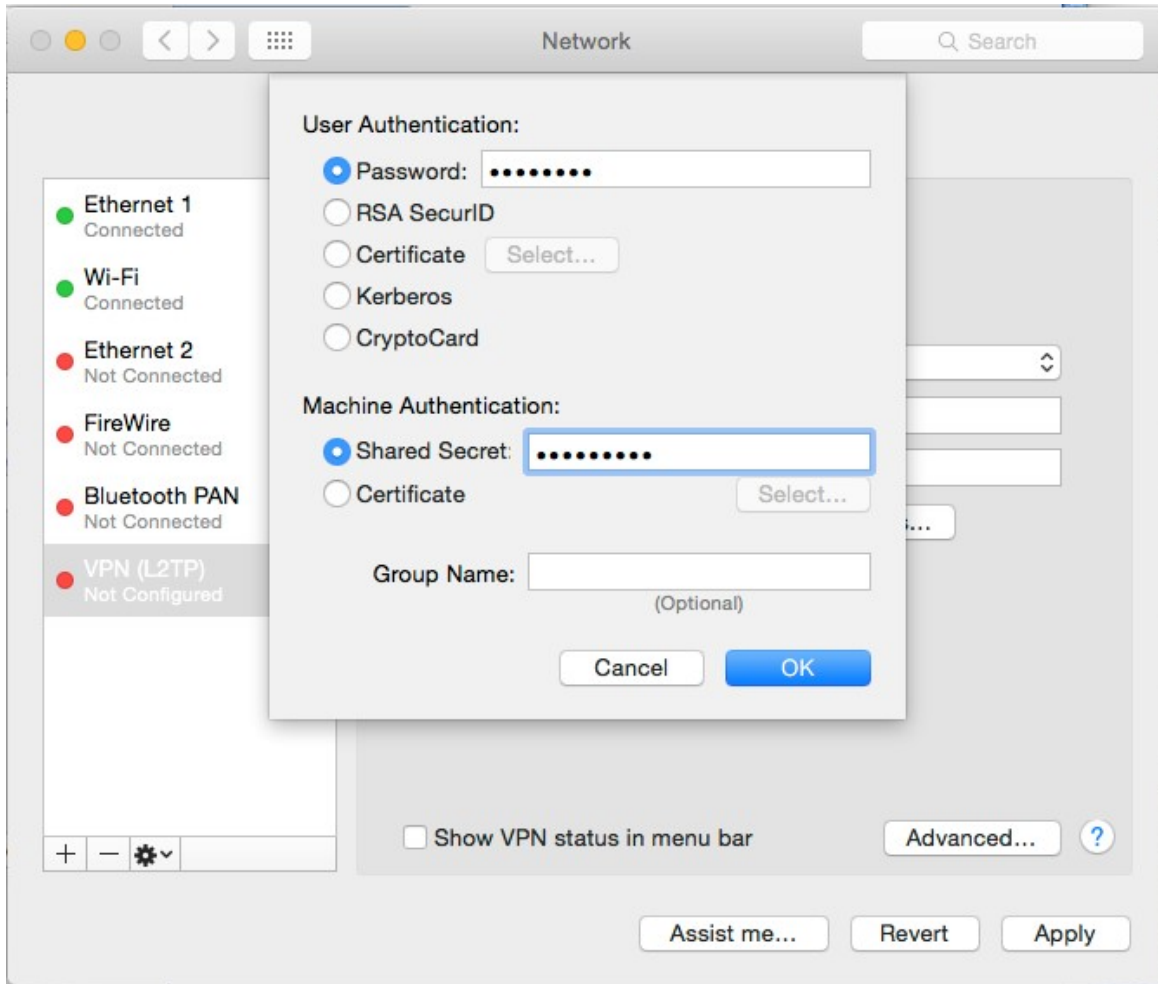
1. Open “System Preferences”
2. Select “Network”
3. On the bottom left hand corner, click on the “+” sign to create a new service.
4. Select or type the following under the appropriate sections and then click “Create”.
 - a. Interface: **VPN**
 - b. VPN Type: **L2TP over IPSec**
 - c. Service Name: **VPN (L2TP)**



5. "VPN (L2TP)" should now appear as a network service. Click on it, and select "Add Configuration" under "Configuration."
6. Label your configuration as anything you'd like and click "Create." **Hint:** It is recommended that you name your configuration "SU VPN".



7. Fill out the remainder of the fields as shown below:
 - a. Server Address: **vpn.syr.edu**
 - b. Account Name: **your SU NetID**
8. Click the "Authentication Setting" button, fill in the information as shown below, and click "OK."
 - a. Password: **your SU NetID password**
 - b. Shared Secret: **ThisIsPSK**



9. Click the check box "Show VPN status in menu bar."

10. Click the "Advanced..." button and make sure "Send all traffic over VPN connection" is **not** checked. Click "OK."

11. Click "Apply" and close System Preferences.

12. To start VPN, go to the menu bar on the upper right hand corner and click on the icon that looks like this:



13. Select "Connect VPN (L2TP)."

Note: If the connection works, the above-mentioned item will change to "Disconnect VPN (L2TP)." Select this when you wish to disconnect from the VPN.

Section 2: Downloading and Running Microsoft Remote Desktop

Now that you are connected to the SU VPN (if off-campus), you are ready to download Microsoft Remote Desktop, which will be the program that connects your personal computer to the remote access server.

1. Open the App Store application.
2. Search for **Microsoft Remote Desktop** in the upper right hand corner.
3. Install the application corresponding to the one below.



Get

Microsoft Remote Desktop 10 4+

Use Microsoft Remote Desktop for Mac to connect to a remote PC or virtual apps and desktops made available by your admin. With Microsoft Remote Desktop, you can be productive no matter where you are.

GET STARTED...

...More

What's New in Version 10.3.8

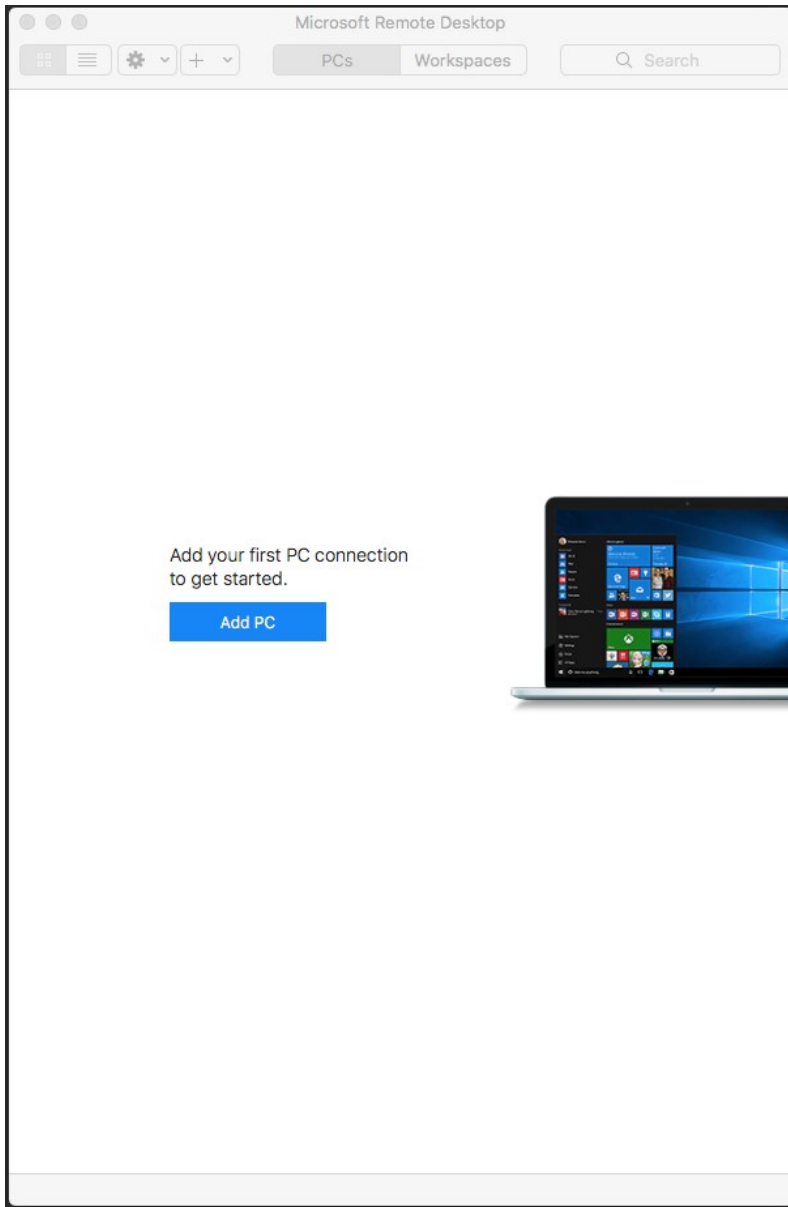
It's 2020 and time for our first release of the year.

...

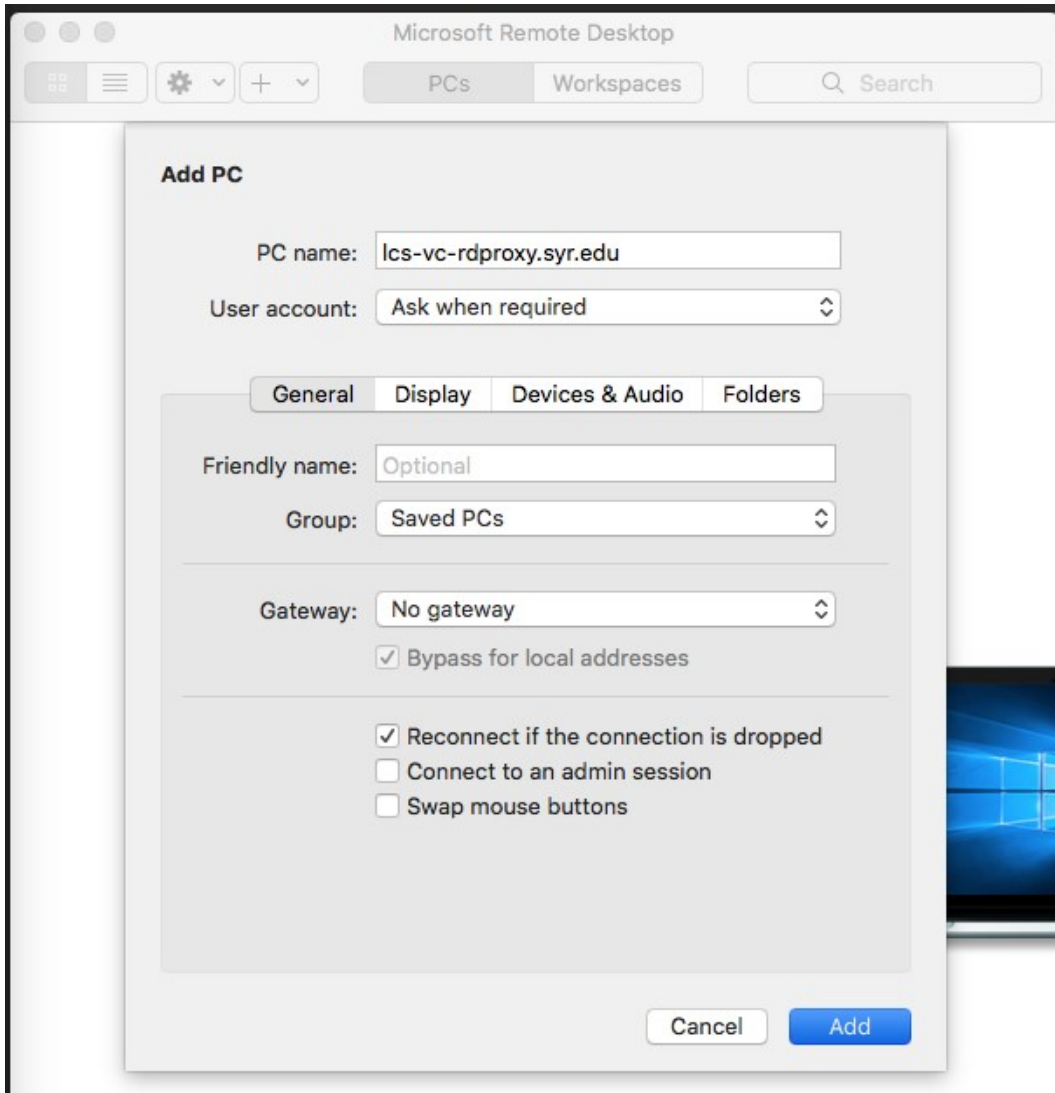
...More

4. After installing, open Microsoft Remote Desktop.

5. Click **Add PC**.

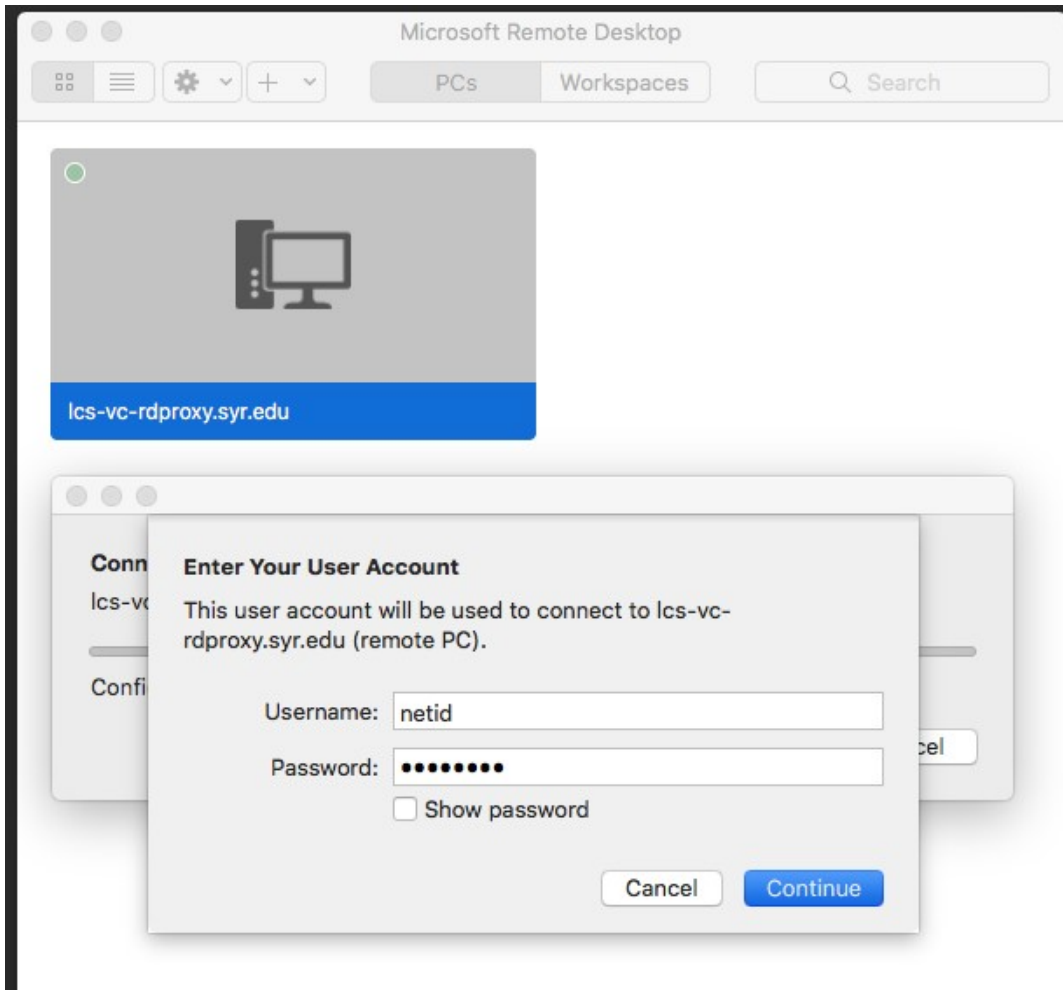


6. Type in the following for PC name as seen below: **lcs-vc-rdproxy.syr.edu**

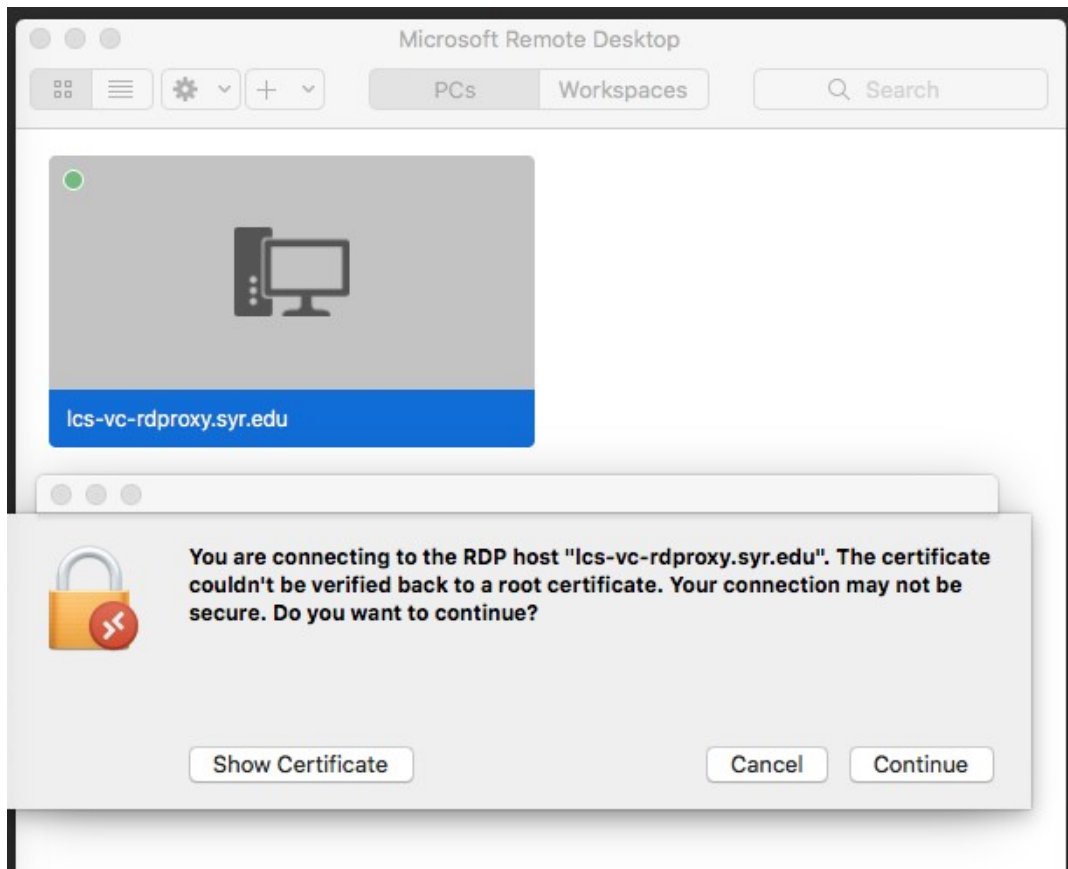


7. Click **Add**

8. You will now see the server added to your list of PCs. Double click on the icon to bring up the login window. Here type your regular netid and password and click continue.



9. You will see a certificate verification message like the following. Select continue to allow the connection.



This will now establish a connection to a remote lab PC. If there are any issues connecting please contact our Helpdesk by emailing ecscit@syr.edu.

IMPORTANT! When you are done using Remote Access:

1. Please "Log Off" from the "Start Menu" at the bottom left corner of your screen.
2. Quit the "Microsoft Remote Desktop" app.
3. Disconnect from the VPN by clicking the below icon from the menu bar in the upper right-hand corner and selecting "Disconnect VPN (L2TP)"

