

Using the Virtual Machine Console

- [VMware Remote Console \(VMRC\) and Web Console](#)
- [Launching the VMware Remote Console \(VMRC\)](#)
- [Installing VMRC on your Local PC](#)
- [Default Virtual Machine Console](#)
- [Other Resources](#)

VMware Remote Console (VMRC) and Web Console

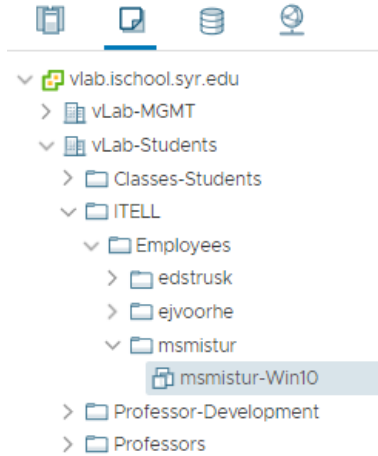
With the vSphere Client, you can access a virtual machine's console by displaying it in a separate Web browser, or from the VMware Remote Console (VMRC). For optimal VM performance, we recommend using the VMRC.

Launching the VMware Remote Console (VMRC)

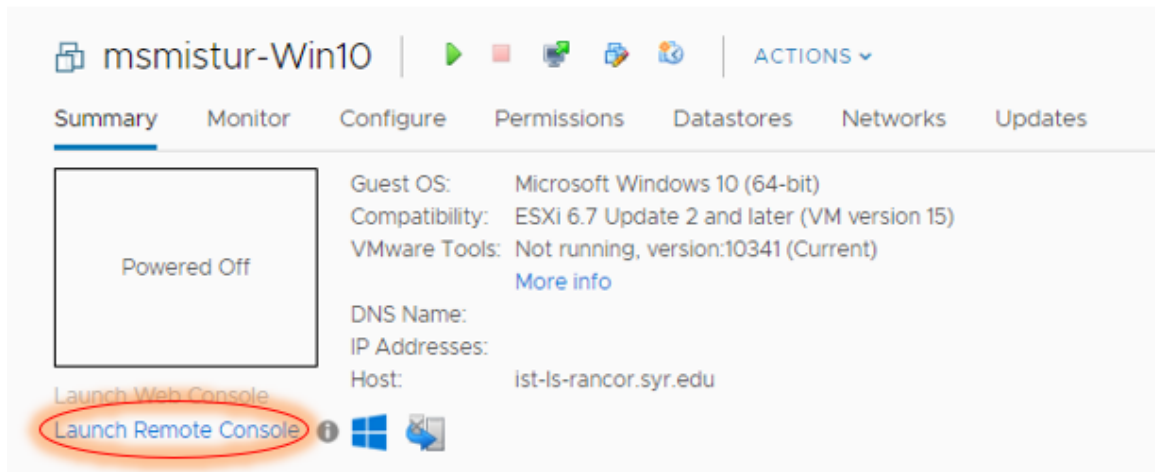
The VMRC opens as a standalone application for the selected virtual machine. You can also launch more than one console to access several remote virtual machines at the same time. You can use the standalone VMRC to connect to client devices. With VMRC, you can access the mouse and keyboard connected to remote virtual machines.

The steps involved in the launching of the VMware Remote Console Application (VMRC) are listed below:

1. In the vSphere Client, navigate to a virtual machine in the inventory.



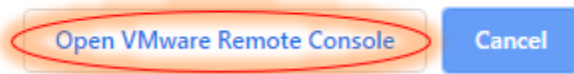
2. Click the **Summary** tab, and click the **Launch Remote Console** link.



3. A **dialog box** opens that requires you to **confirm** that you want to open the remote console. Click **Open VMware Remote Console** to confirm.

Open VMware Remote Console?

Always open these types of links in the associated app



Installing VMRC on your Local PC

VMRC is not installed by default on a personal computer. The steps to install VMRC are listed below:

1. A pop up should appear asking you to download the Remote Console. Click **Download Remote Console**.

Launch Remote Console ⓧ

If you have VMware Remote Console installed, it will start automatically now. If not, you can use the link below to download it.



2. You will be brought to the VMware website where you can download the VMware Remote Console for your corresponding operating system. Click **Download**.

Product Downloads	Version History
Product/Details	
VMware Remote Console 11.0.1 for Mac File size: 21.50 MB File type: dmg Read More	Download
VMware Remote Console 11.0.0 for Windows File size: 58.82 MB File type: zip Read More	Download
VMware Remote Console 11.0.0 for Linux File size: 53.75 MB File type: sh Read More	Download

3. You will be brought to a page where you need to create a VMware account if you don't have one already. It's free of charge.
4. Once you've created the account and login, a zip file will be downloaded to your computer.
5. Extract the zip file and click the VMware installation launcher.



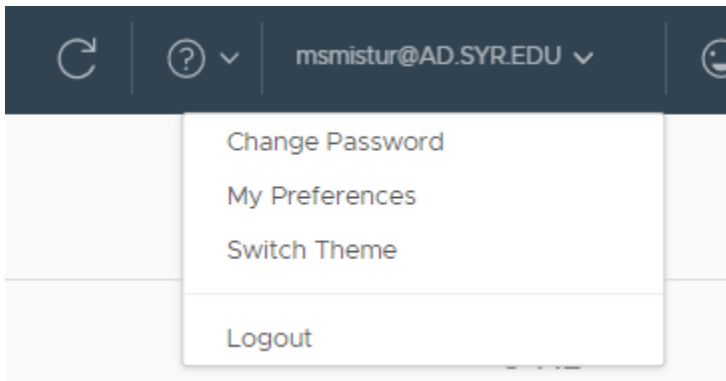
6. Throughout the installation process, keep clicking **Next**. You can uncheck the boxes on the **User Experiences Settings** part of the installation if you'd like.
7. Finally, click **Install** and you will have the VMRC ready to use.

Default Virtual Machine Console

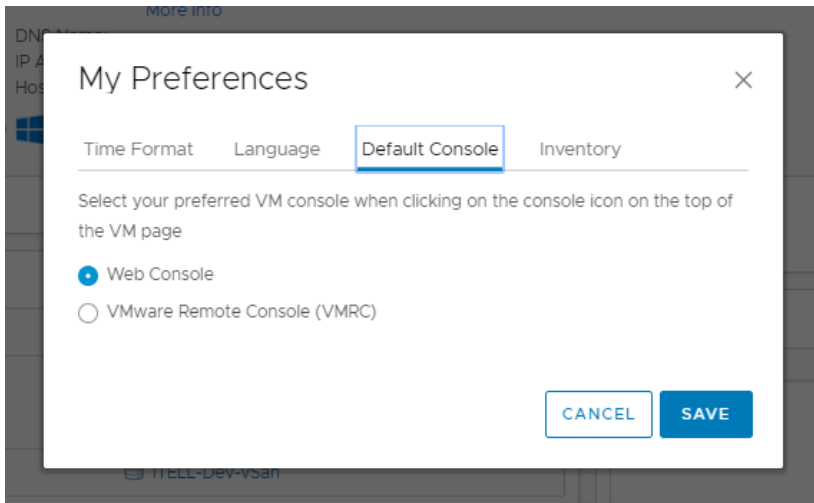
You can select your preferred Virtual Machine console when clicking on the console icon on the top of the Virtual Machine page.

The steps involved in the setting the default virtual machine console are listed below:

1. Click on your **Account** and select **My Preferences**, located in the upper-right hand corner.



2. Navigate to the **Default Console** tab.



3. Select your preferred virtual machine console.

Other Resources

- [Connecting to vLab](#)
 - [Student VM Access Procedure](#)
 - [Using the Virtual Machine Console](#)
 - [Mouse and Keyboard - HTML5 Client](#)
 - [Navigating the HTML5 vSphere Client](#)
- [vLab Support](#)
 - [Install Operating System on a VM Shell \(.ISO file\)](#)
 - [Disabling IIS in Windows 10 VM](#)
 - [Virtual Machine - No Internet Connection](#)
 - [Virtual Machine - Cannot Sign-in](#)

