


# Configure VPN on Windows

Syracuse University Remote Access (SURA) is a tool provided by Syracuse University to automatically configure a Windows PC to securely connect to university resources via Virtual Private Network (VPN).

Using SURA you can access University network drives (H drive), connect to SU's VPN (virtual private network), use network printers at SU, and access your email via a web client.

 SURA only runs on Windows. To configure a VPN for macOS, please follow the steps on the [Configure VPN on macOS](#) page.

## Table of Contents

- [How to Use the SURA Utility on Windows](#)
  - [Download SURA to your Computer](#)
  - [Launch SURA](#)
  - [Select an action](#)
- [Minimizing and Exiting the SURA Utility](#)

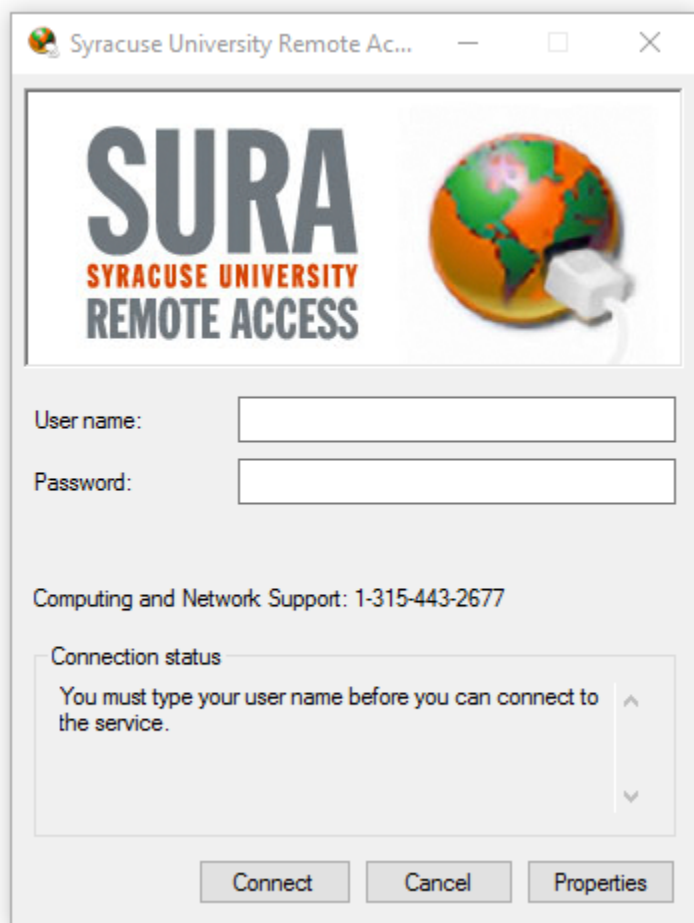
## How to Use the SURA Utility on Windows

### Download SURA to your Computer

Go to the [SU Downloads](#) page to obtain the SURA utility. When prompted, save the sura.exe file to a location you will be able to easily find again on your local computer (such as your desktop or documents folder).

### Launch SURA

Double-click on the sura.exe file. Enter your SU NetID username and password in the appropriate fields and click Connect.



Syracuse University Remote Ac...

**SURA**  
SYRACUSE UNIVERSITY  
REMOTE ACCESS

User name:

Password:

Computing and Network Support: 1-315-443-2677

Connection status  
You must type your user name before you can connect to the service.

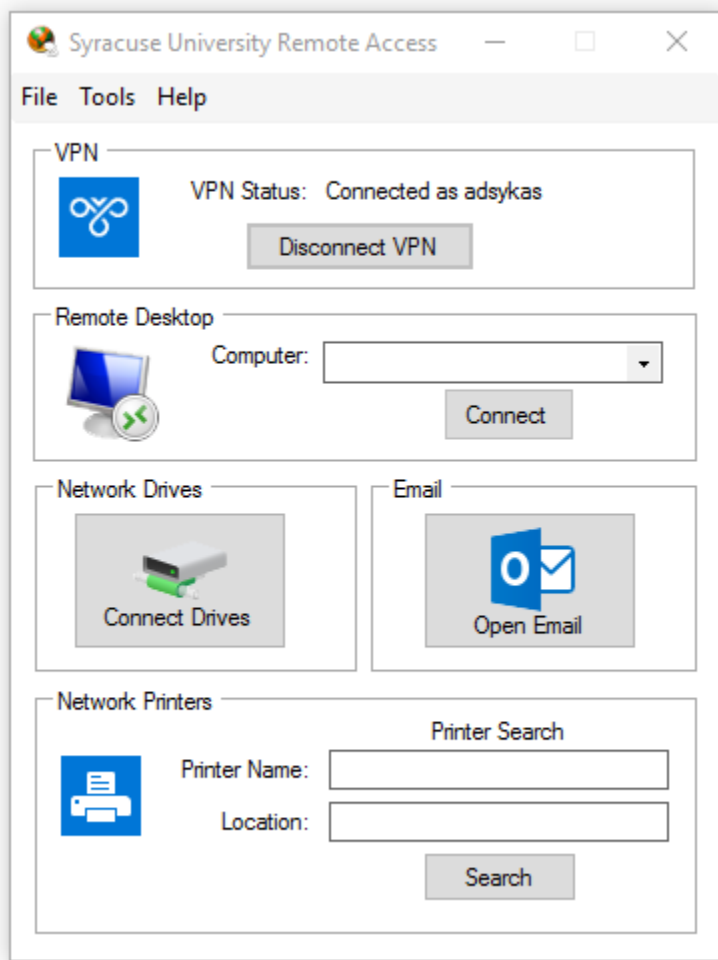
Connect Cancel Properties

## Select an action

Depending upon your status with the University such features as Remote Desktop, Connect Drives, Open Email and Network Printing will be available through the SURA interface.

### Note:

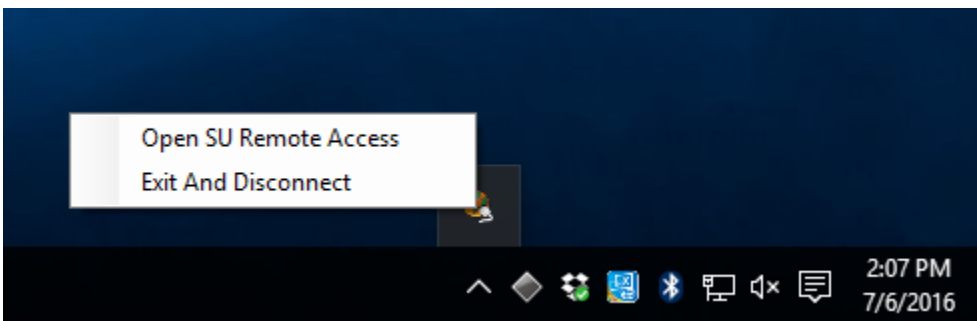
- Green progress bars will appear under the Remote Desktop, Connect Network Drives and Open Email buttons while the SURA utility is verifying its connection to these resources.
- Greyed-out buttons mean you do not have rights to that function.



## Minimizing and Exiting the SURA Utility

When the SURA window is minimized or closed, all connections and functionality is maintained. You will see a small SURA icon running in the System Tray (icons to the left of the clock).

To fully disconnect the SURA utility from the University network, right-click on the SURA icon in the System Tray and select Exit and Disconnect.



Or in the SURA utility, click File > Exit And Disconnect.

