

Local Admin Password Service (LAPS)

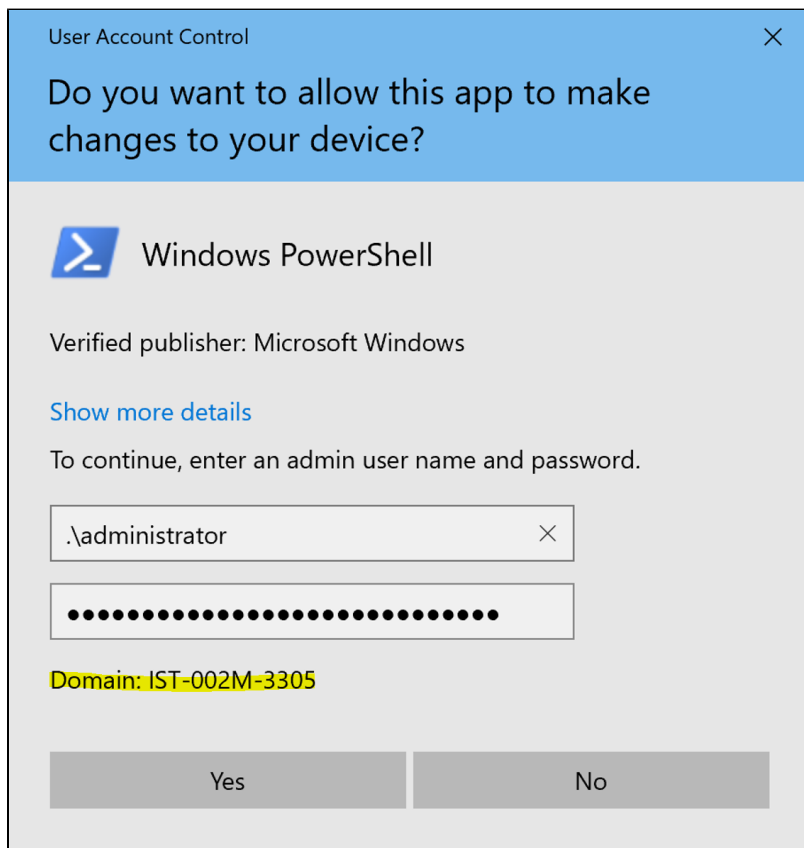
How to use the 'administrator' password provided by Tech Services:

1) Move your installer (.exe or .msi) file into the "C:\Apps-SU" folder. If this folder doesn't exist, you can create it. ('C' is the drive letter assumed to be a local disk on your computer; change this if necessary).

2) Double-click the file to run the installer.

3) An administrator login prompt will appear (pictured below). For the username, enter ".\administrator" without the quotes. You should see the 'Domain' field change from "AD" to your computer's name.

- For the password, paste in the 29-character code provided by Tech Services.



4) Click "Yes".



Note: If any software packages provide the option to "Install for my user only" or "Install for everyone", you'll need to choose the option to install for everyone.